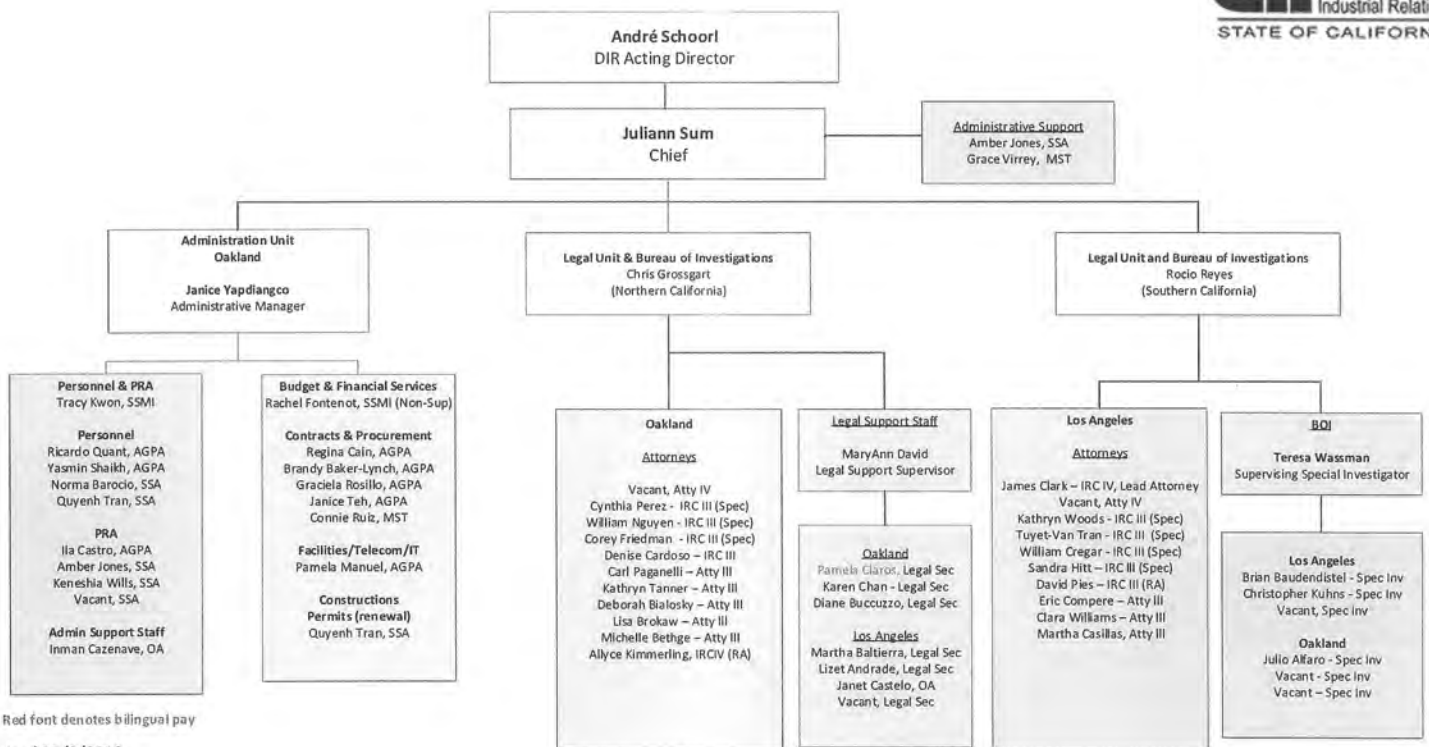


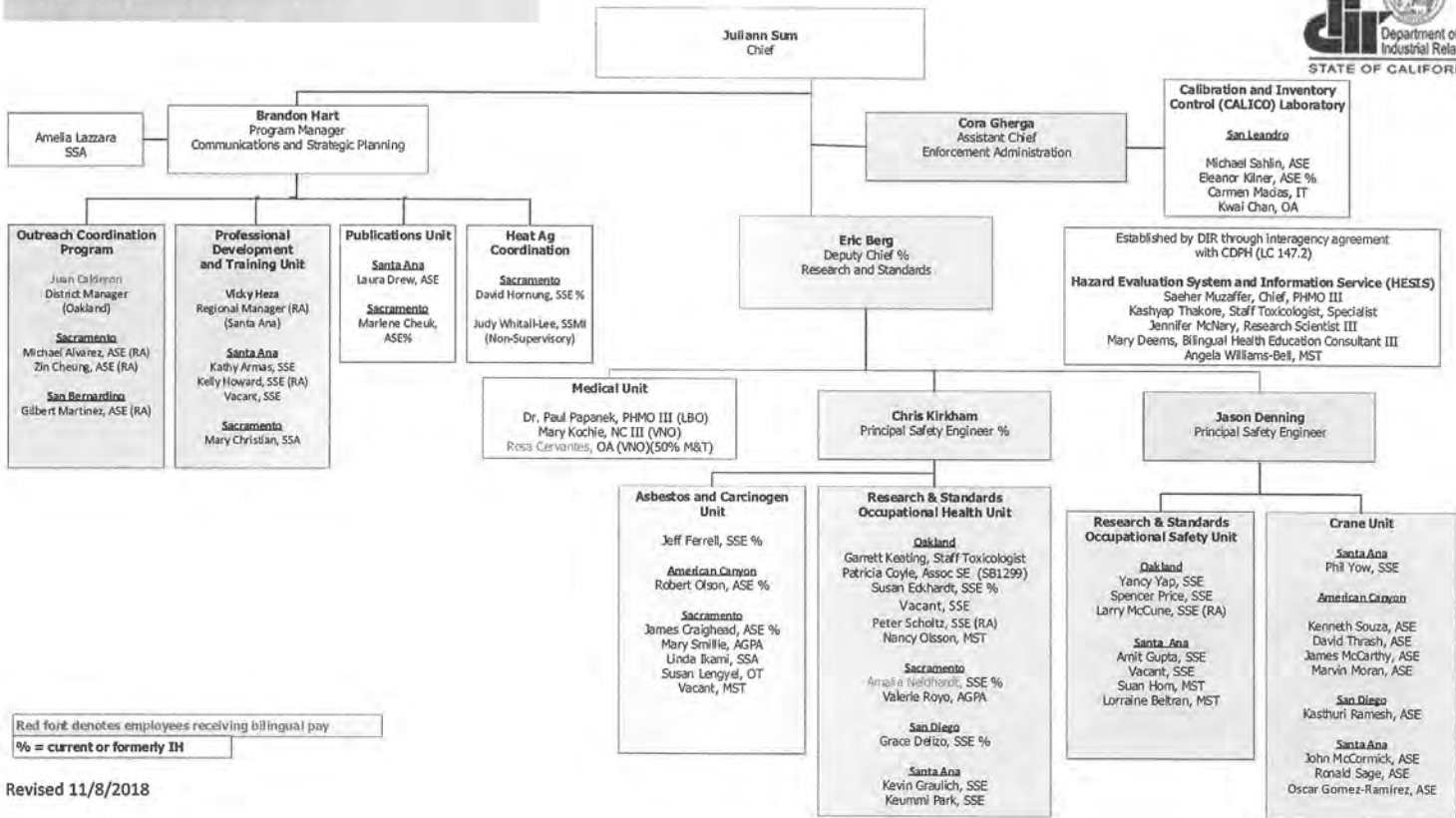
**DIVISION OF OCCUPATIONAL SAFETY AND HEALTH
ADMINISTRATION/LEGAL-BOI**



Red font denotes bilingual pay

Revised 11/8/2018

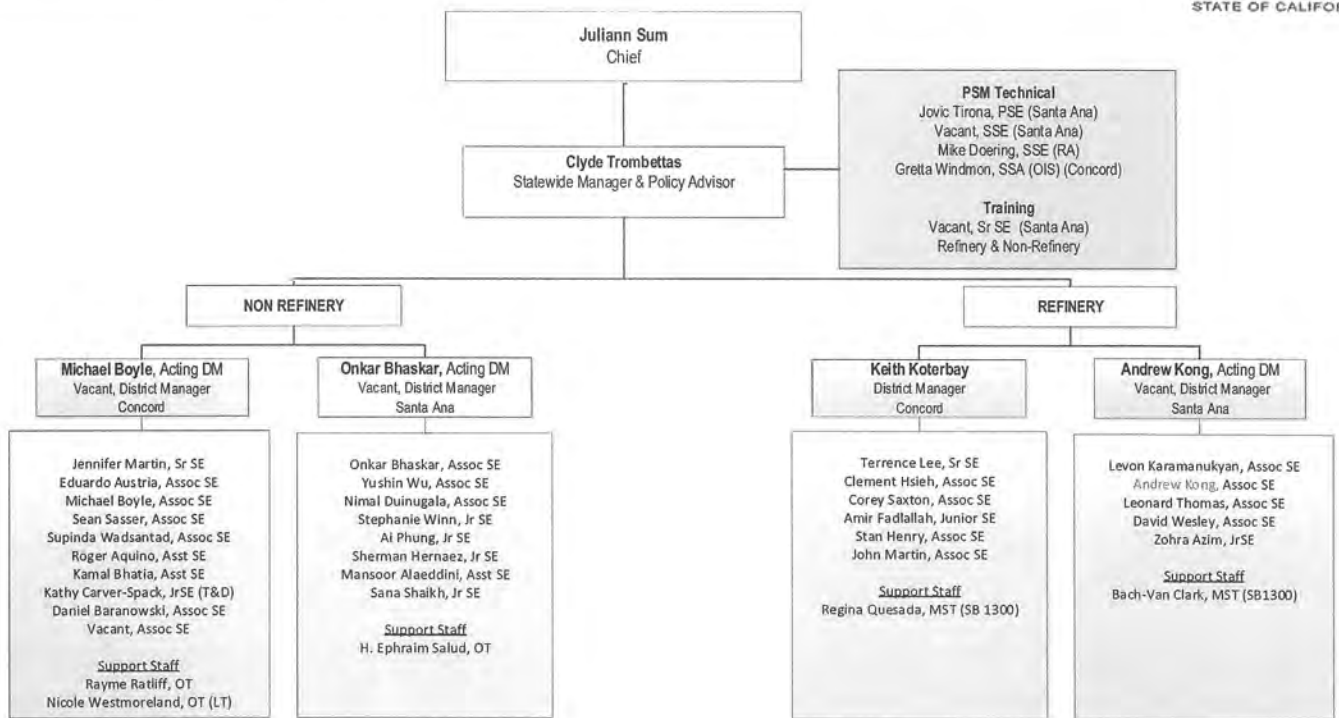
**Division of Occupational Safety and Health
Health, Safety, Medical, and Communications**



Red font denotes employees receiving bilingual pay
% = current or formerly IH

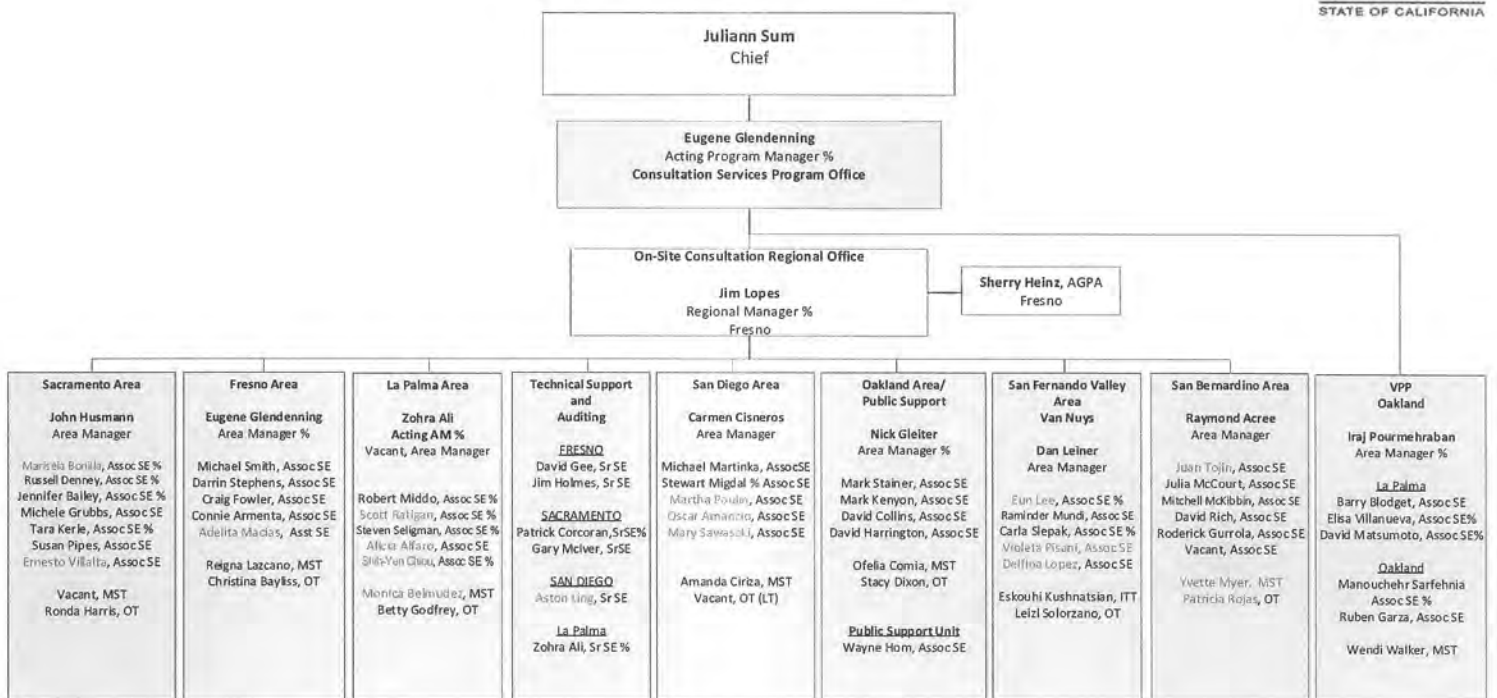
Revised 11/8/2018

**DIVISION OF OCCUPATIONAL SAFETY AND HEALTH
ENFORCEMENT BRANCH - PROCESS SAFETY MANAGEMENT (PSM) UNIT**



Red font denotes employees receiving bilingual pay

**Division of Occupational Safety and Health
Consultation Services Branch**



Red font denotes employees receiving bilingual pay
% = current or formerly IH

Revised 11/8/2018

**Division of Occupational Safety and Health
Public Safety / Engineering**

